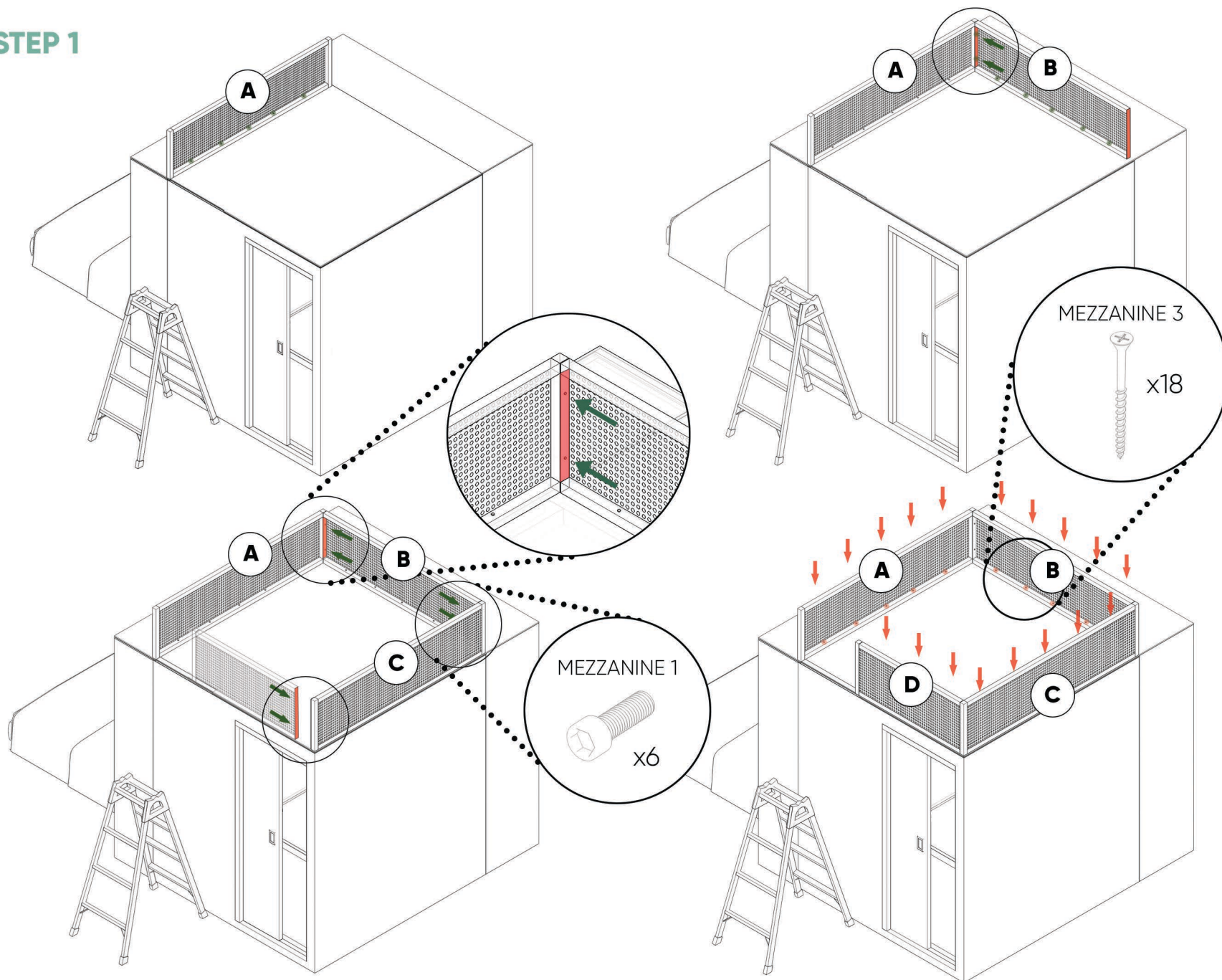


FDOMES MODULES

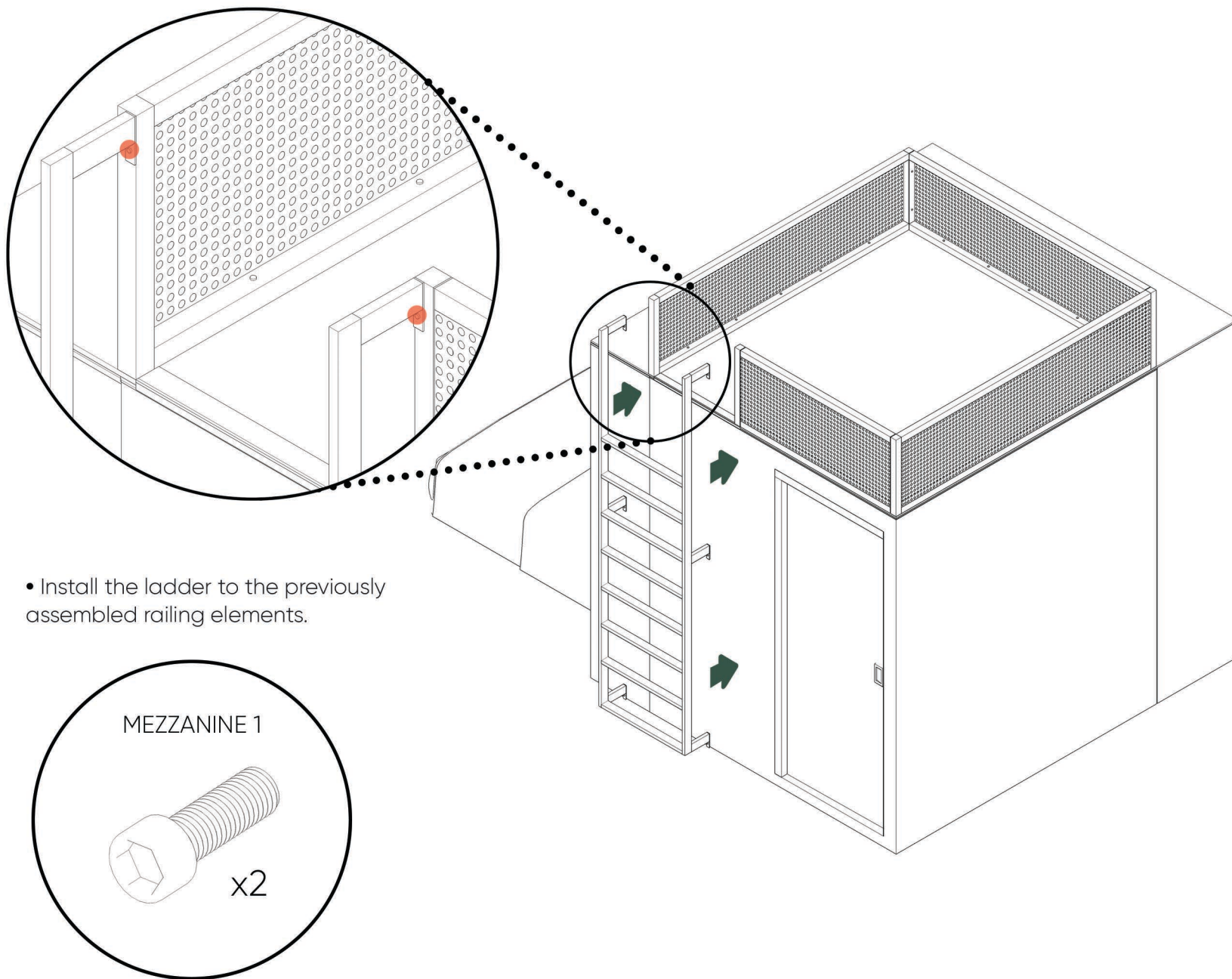
MEZZANINE – ASSEMBLY GUIDE

STEP 1

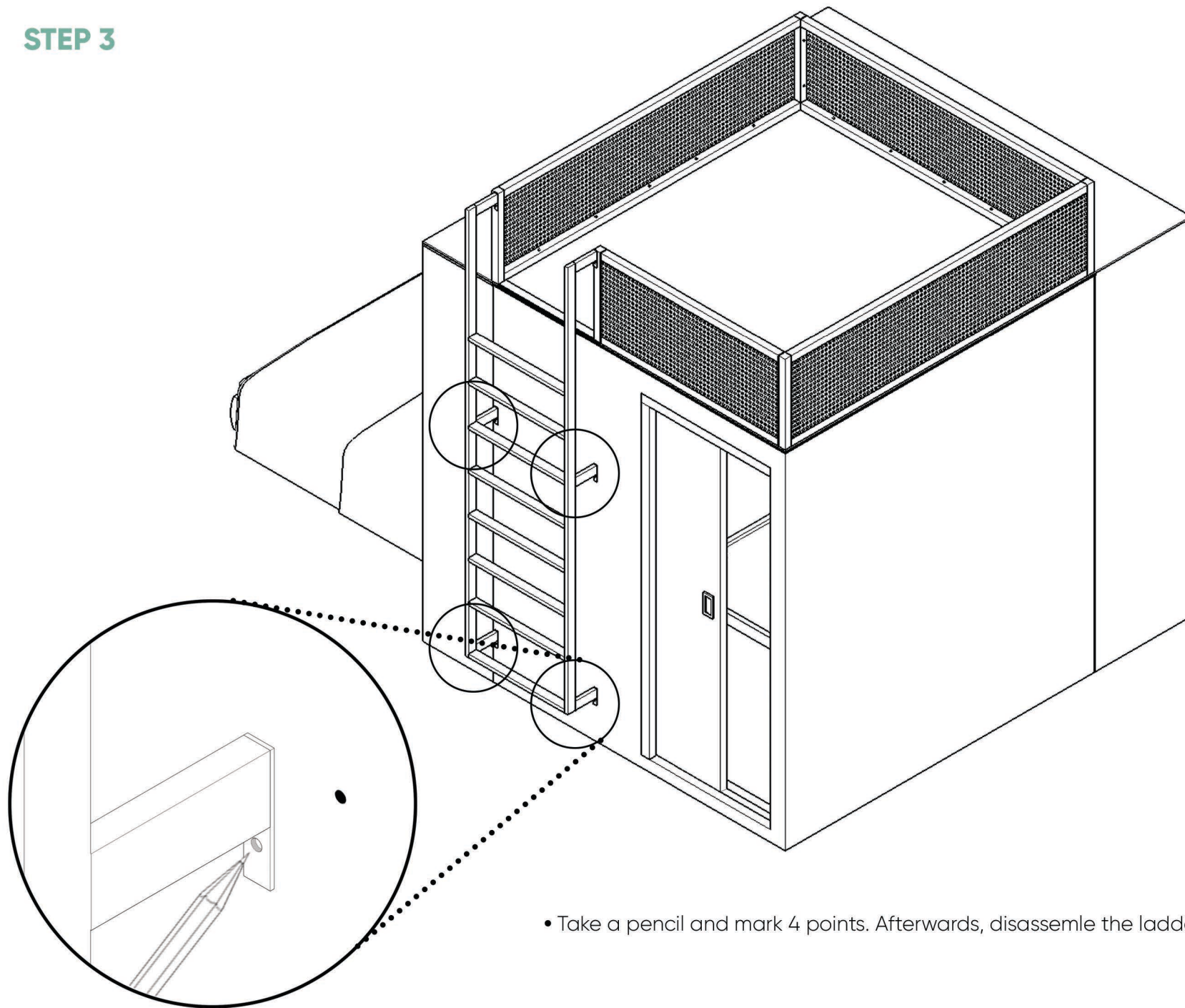


- Connect the elements on the top of the bathroom module using the screws (Mezzanine „1” and „3”) according to the drawings.

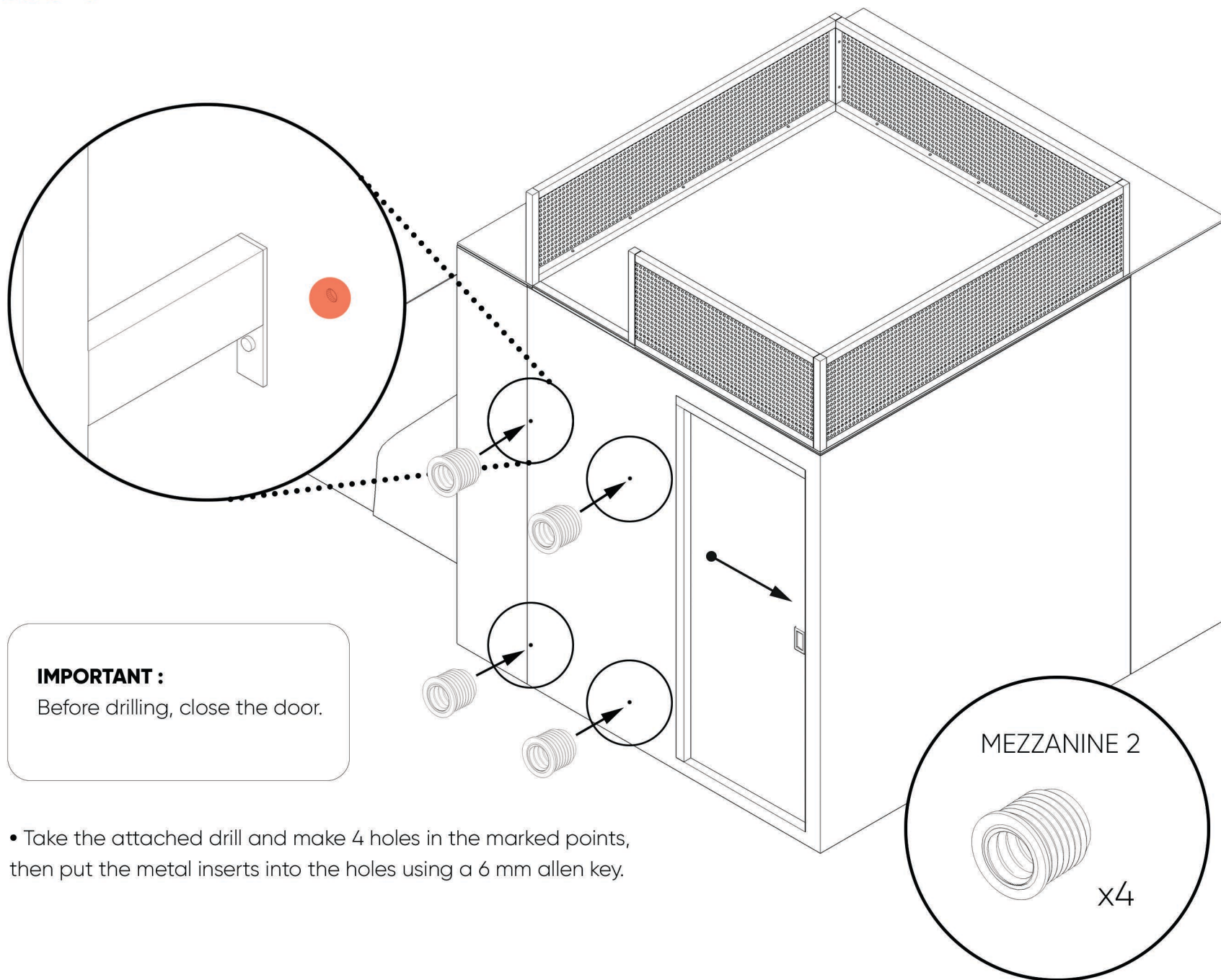
STEP 2



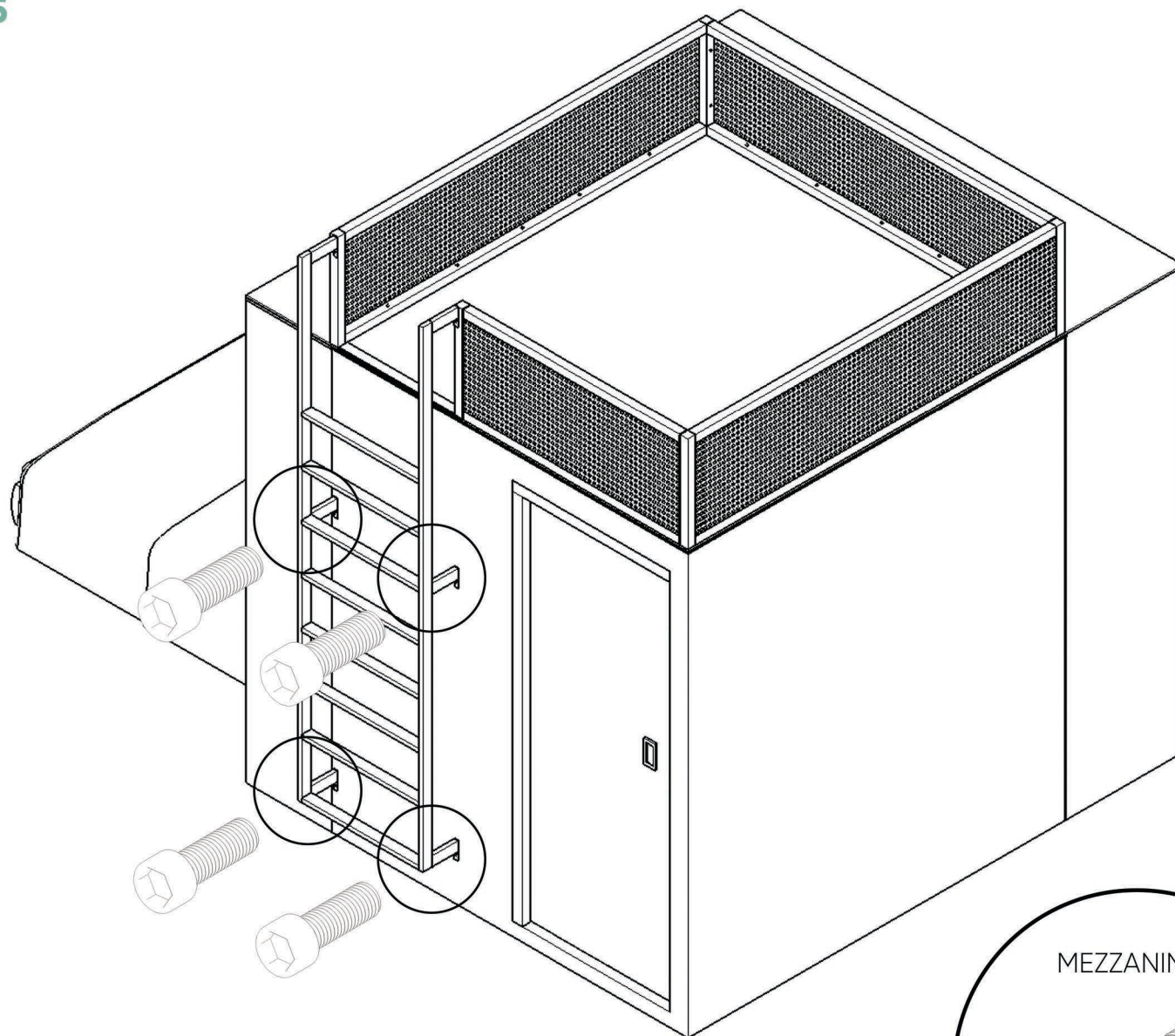
STEP 3



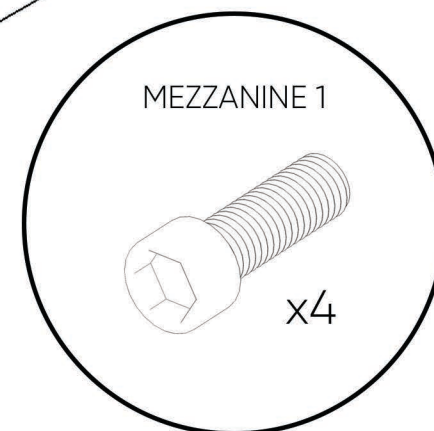
STEP 4



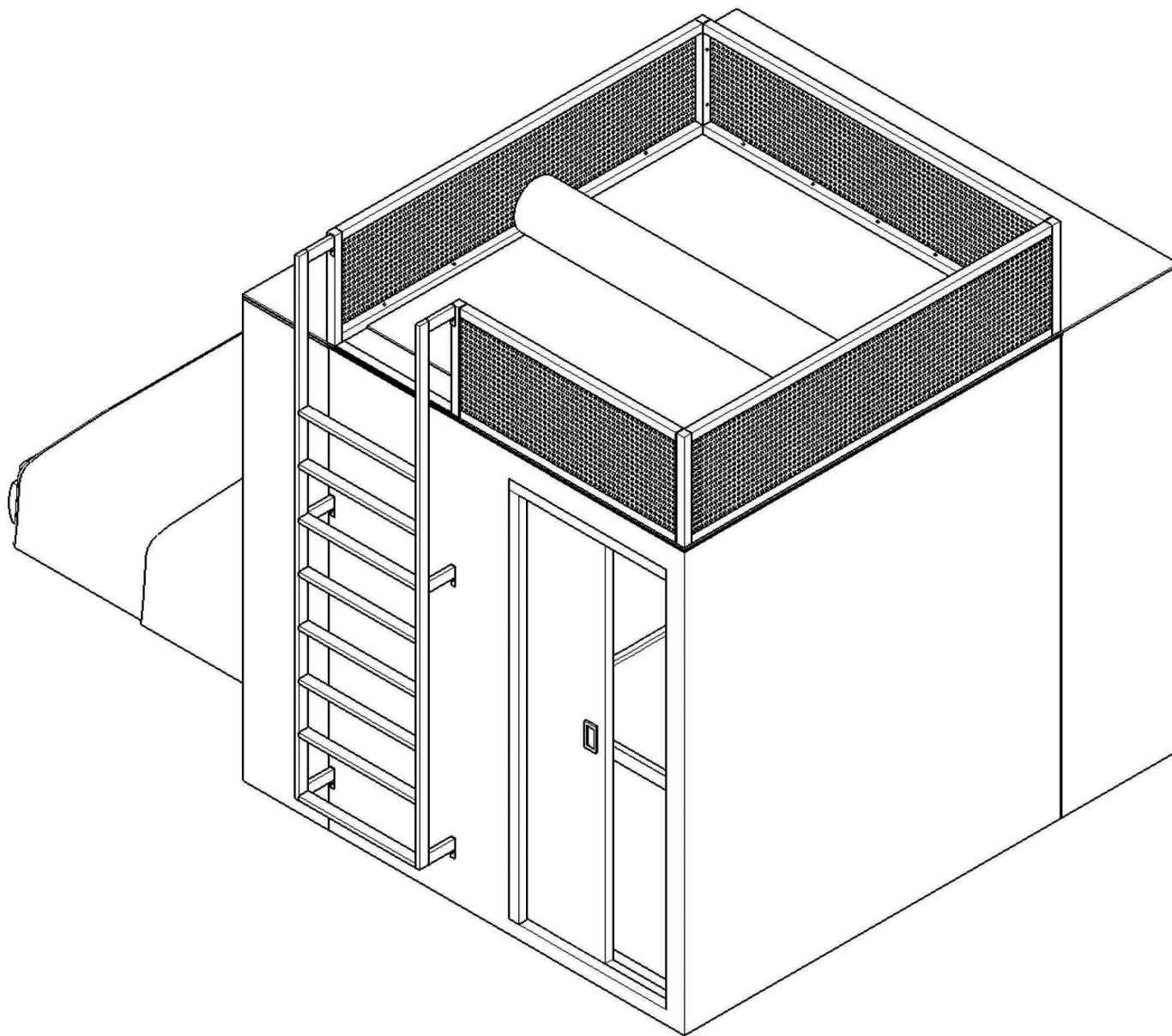
STEP 5



- Screw the ladder back into place using the attached bolts like in the picture.



STEP 6



- Lay the carpet on the mezzanine floor.